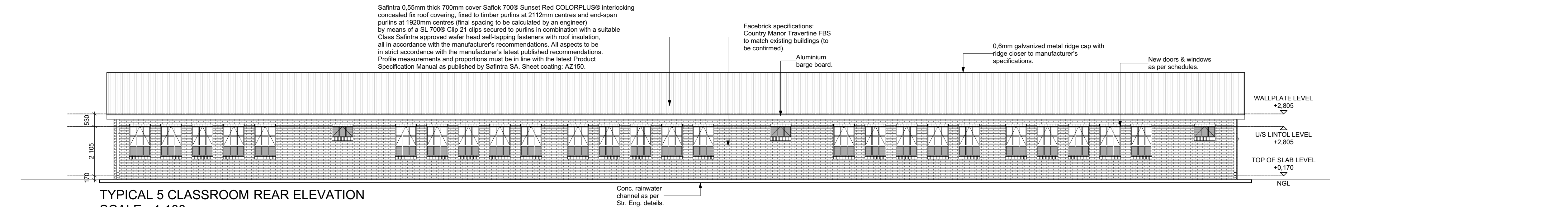
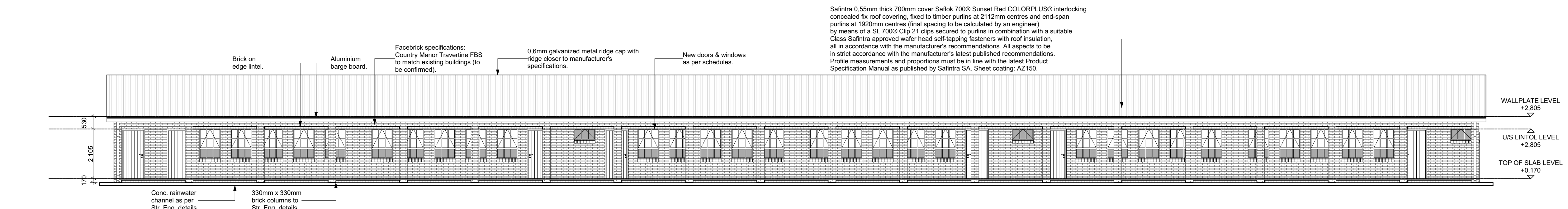


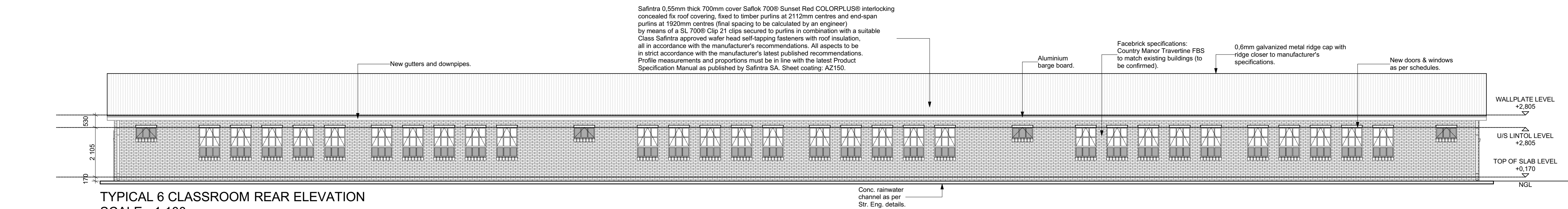
TYPICAL 5 CLASSROOM FRONT ELEVATION
SCALE - 1:100



TYPICAL 5 CLASSROOM REAR ELEVATION
SCALE - 1:100

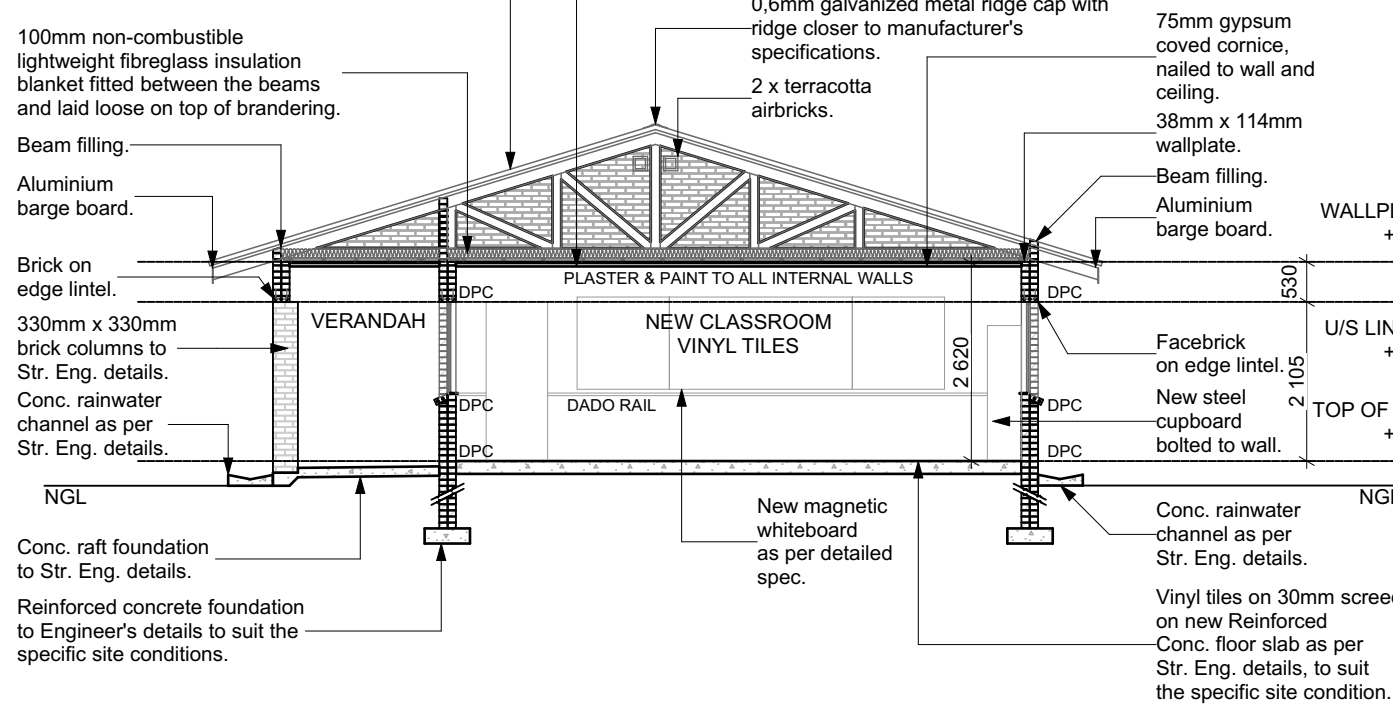


TYPICAL 6 CLASSROOM FRONT ELEVATION
SCALE - 1:100



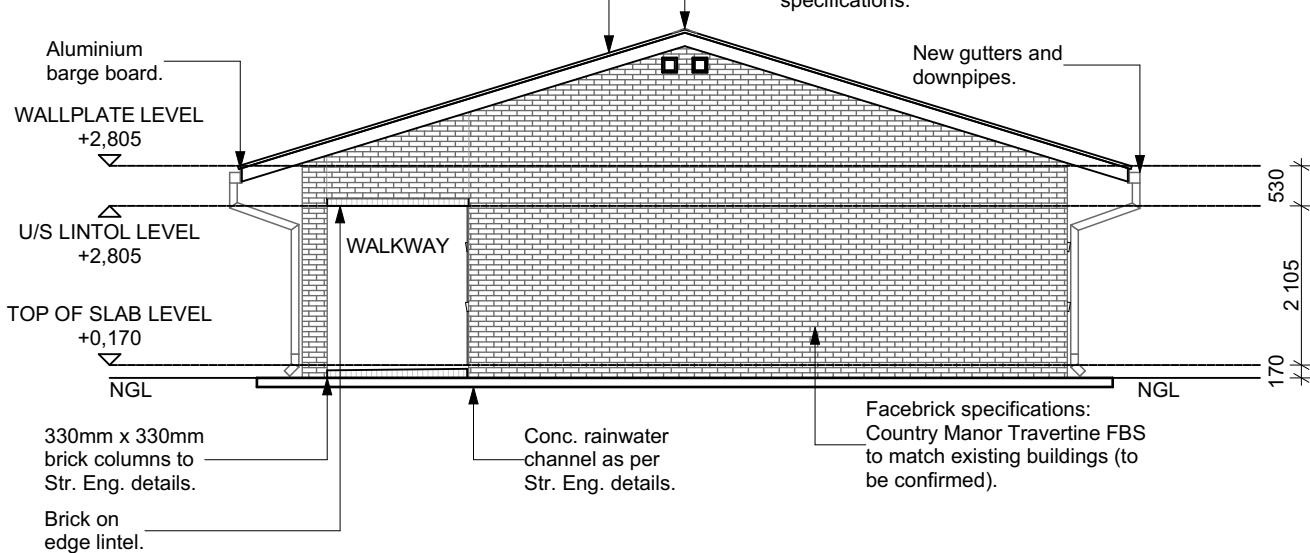
TYPICAL 6 CLASSROOM REAR ELEVATION
SCALE - 1:100

Safintra 0,55mm thick 700mm cover Saflok 700® Rain Cloud COLORPLUS® interlocking concealed fx roof covering, fixed to timber purlins at 2112mm centres and end-span purlins at 1920mm centres (final spacing to be calculated by an engineer) by means of a SL 700® Clip 21 clips secured to purlins in combination with a suitable Class Safintra approved wafer head self-tapping fasteners with roof insulation, all in accordance with the manufacturer's recommendations. All aspects to be in strict accordance with the manufacturer's latest published recommendations. Profile measurements and proportions must be in line with the latest Product Specification Manual as published by Safintra SA. Sheet coating: AZ150.



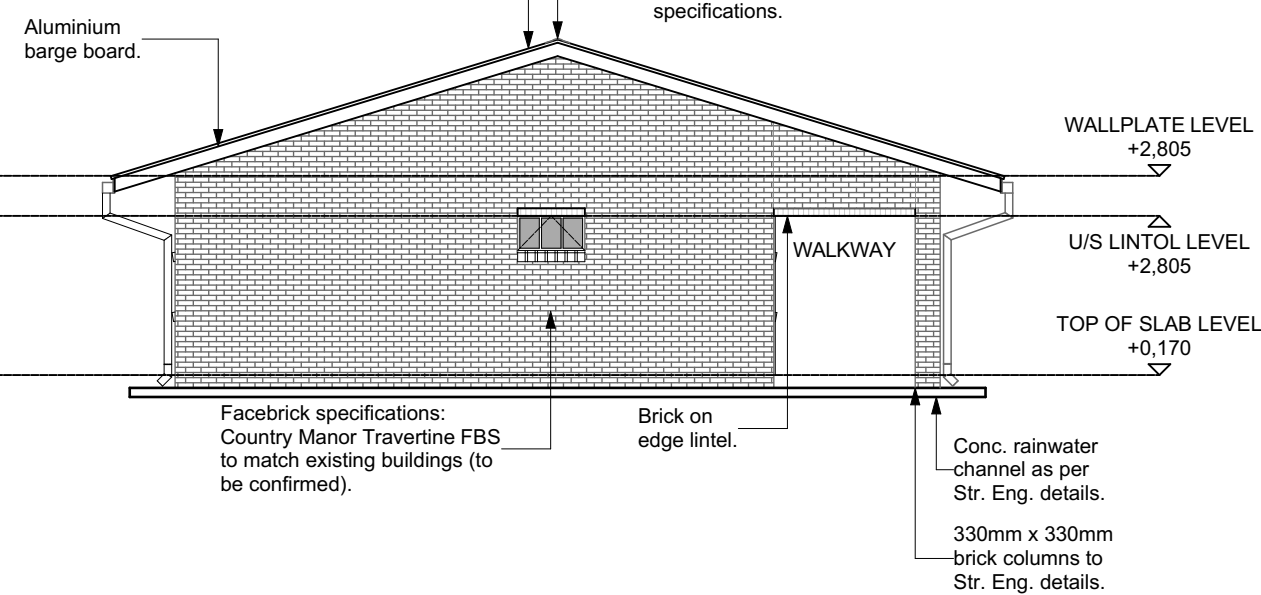
TYPICAL SECTION A - A
SCALE - 1:100

Safintra 0,55mm thick 700mm cover Saflok 700® Sunset Red COLORPLUS® interlocking concealed fx roof covering, fixed to timber purlins at 2112mm centres and end-span purlins at 1920mm centres (final spacing to be calculated by an engineer) by means of a SL 700® Clip 21 clips secured to purlins in combination with a suitable Class Safintra approved wafer head self-tapping fasteners with roof insulation, all in accordance with the manufacturer's recommendations. All aspects to be in strict accordance with the manufacturer's latest published recommendations. Profile measurements and proportions must be in line with the latest Product Specification Manual as published by Safintra SA. Sheet coating: AZ150.



TYPICAL SIDE ELEVATION
SCALE - 1:100

Safintra 0,55mm thick 700mm cover Saflok 700® Sunset Red COLORPLUS® interlocking concealed fx roof covering, fixed to timber purlins at 2112mm centres and end-span purlins at 1920mm centres (final spacing to be calculated by an engineer) by means of a SL 700® Clip 21 clips secured to purlins in combination with a suitable Class Safintra approved wafer head self-tapping fasteners with roof insulation, all in accordance with the manufacturer's recommendations. All aspects to be in strict accordance with the manufacturer's latest published recommendations. Profile measurements and proportions must be in line with the latest Product Specification Manual as published by Safintra SA. Sheet coating: AZ150.



TYPICAL SIDE ELEVATION
SCALE - 1:100

NOTES:
1. All boundaries, dimensions and levels are to be checked on site before construction and any discrepancies are to be reported to the office of the Architect.
2. Partial Service: Any discrepancies with site or other information is to be advised to the Architect and direction or approval is to be sought before the implementation of the detail.
3. Do not scale the drawing.
4. For the purpose of coordination, all relevant parties must check this information prior to implementation and report any discrepancies to the Architect.

Revisions:			
Rev No	Date	Description	Rev By
A	04/11/22	For Information Purposes Only	KG

Architect :

Name :

Signature :

Client :

Name :

Signature :



Project:

CONDITION ASSESSMENT
LIKUBU PRIMARY SCHOOL

Drawing description:

PROPOSED NEW CLASSROOMS
SECTIONS AND ELEVATIONS

Drawn:

ISENZEKO ENGINEERING

A1

Scales: AS SHOWN ON DRAWING

FOR INFORMATION

Drawing Number:

082-LPS-105

Revision:

A